

✓ Verifier (FSX-080)

Portable X-Ray Inspection System

The Verifier (FSX-080) is a low-cost solder quality "QuickCheck™" verification tool for manufacturing defect detection and rework verification applications. The Verifier provides continuous real-time x-ray inspection for quality assessment of manufacturing and rework operations. Systems are CE, CSA and TUV certified and exceed all safety and radiation protection requirements set forth by CDRH and FDA regulations.

Key Features

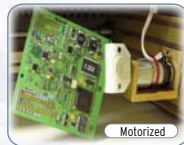
The Verifier x-ray inspection system is an ideal entry-level x-ray inspection system and complementary "Quickcheck™" rework solder verification tool. The Verifier's primary role is to provide basic failure analysis (bridging, missing, poor reflow shape and large voids) and real-time quality inspection of rework operations. Find defects quickly and easily; an excellent value at an affordable price.

- Easy-to-use
- Extremely low maintenance
- "Best in Class" Performance
- Flexible sample handling and manipulation
- Large field-of-view (for fast inspections)
- Small 32"x 34" footprint. Easily rolled wherever needed (production area, proto lab, rework, etc.)

***Safe:** The Verifier exceeds all safety and radiation protection requirements set forth by CDRH and FDA regulations. Systems are CE, CSA & TUV certified.

Easy-to-Use Controls

Intuitive controls and indicators for On/Off, Gain, Zoom, Focus and Interlock functions. Operators can be trained quickly and easily.



Specifications

Hardware

- Footprint: 32"x 34"
- Board handling: up to 16"x 18"
- Angled viewing: up to 30° (360° w/ fixture)
- X-ray source: 80kV, 50 micron Microfocus
- Resolution: >20 lp/mm
- Magnification: >100x
- Field-of-view: up to 40mm
- PC: Intel/ATX mini tower w/ printer & CD RW
- Flat panel display: 17" (19" optional)
- Network ready: Ethernet 10/100 base-T

System/Image Processor Software

- **Operating System:** Windows™ XP Pro
- **Image Processor:** Verifier VIP (standard)

Optional Image Processors

- VIP Plus Enhanced Image Processor
- VIPx Advanced Image Processor
- * See FocalSpot VIP Series Datasheet for details

Flexible Sample Holder

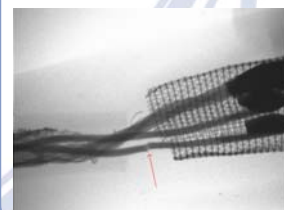
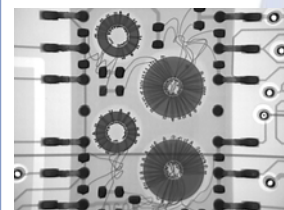
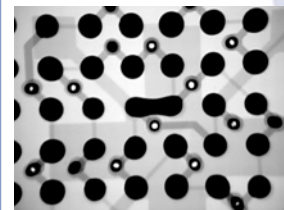
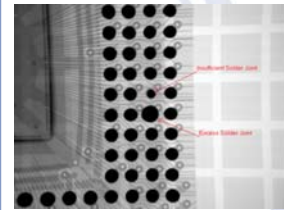
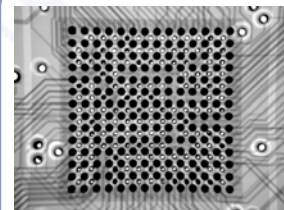
- **Sample Door:** 28" wide, for easy load/unload
- **Manual X/Y sample positioner:** 16"x 18"
- **Angled Viewing:** 0-30° (standard fixture)
- **Rotation Fixtures:** Manual and Motorized options for 360° rotation of small boards.



28-inch Load Door



Sample Images



SOLDER QUALITY VERIFICATION
X-RAY INSPECTION

FocalSpot, Inc. is a premier provider of affordable high-quality Inspection and Rework equipment to the electronics manufacturing industry. FocalSpot designs, manufactures and markets affordable X-Ray Inspection Systems (worldwide) and distributes DEN-ON advanced lead-free rework solutions in North/South America, Canada and Mexico.